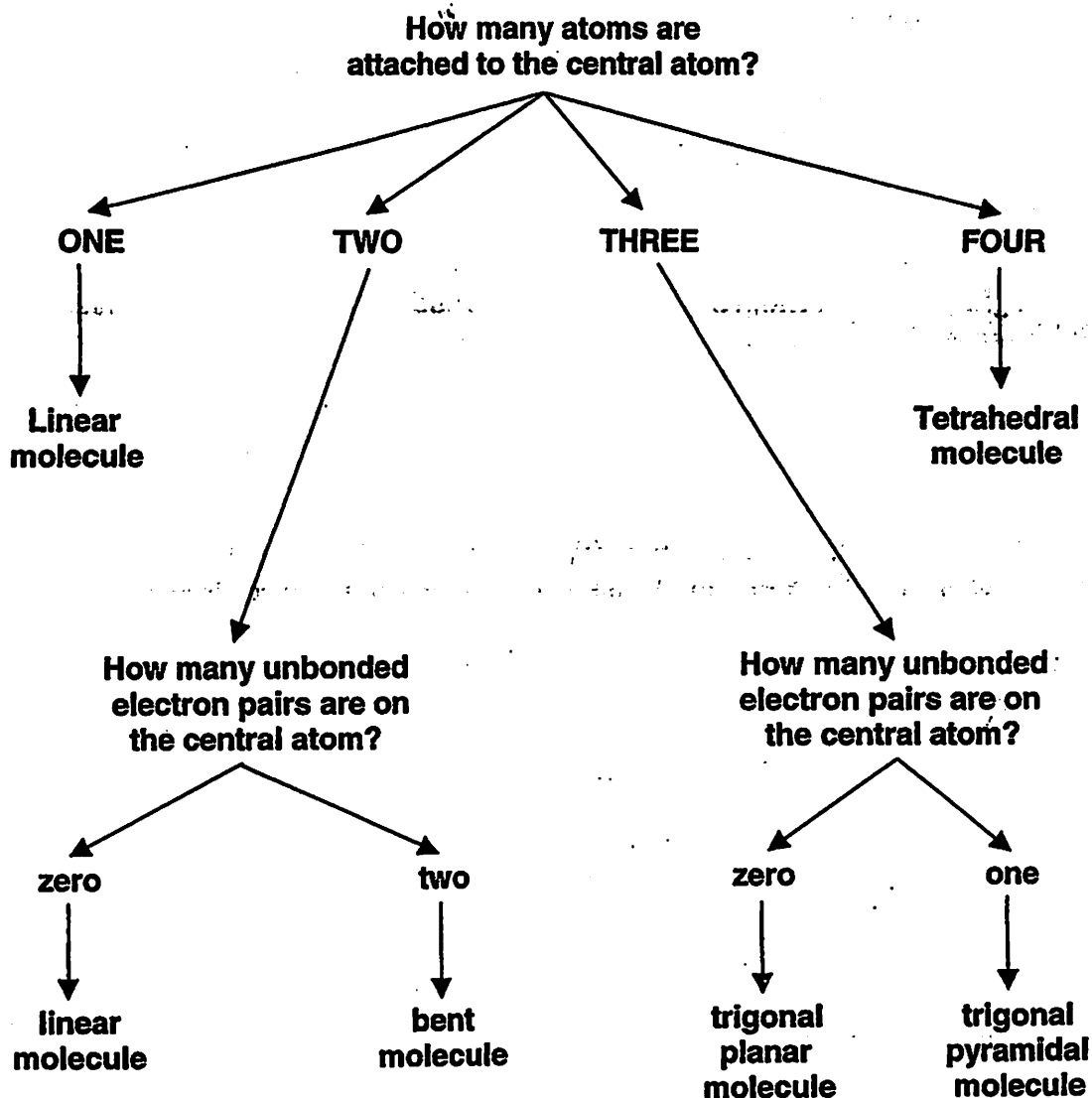


## Station 5 Continued: A flow chart of molecular shapes

The following flow chart is used to determine the shape of any covalent molecule. To use this chart, you'll need to look at the middle atom and figure out how many electron pairs (shown as two dots in diagrams) and atoms it has.



*If your molecule has only two atoms, either can be considered to be the "central atom", making the molecule linear. Molecules with two atoms are always linear.*